

CERTIFICATE OF LOCATION OF GOVERNMENT CORNER

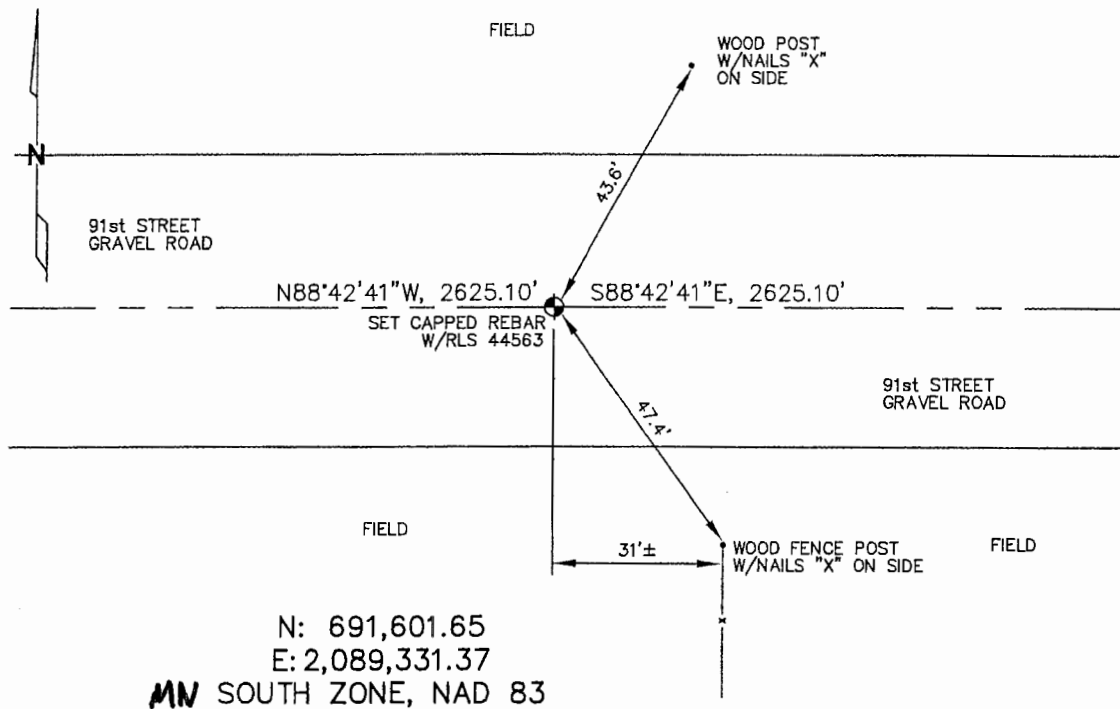
SOUTH 1/4 Corner of Section 17, Township 106, Range 43, 5TH P.M.

STATE OF MINNESOTA, County of MURRAY

At the corner location shown on the sketch :

- On _____ found _____
- left monument as found, lowered monument, removed monument (explain)
- On 3/22/2006 set 5/8" REBAR WITH CAP: RLS 44563 IN GRAVEL ROAD.

Sketch of reference ties



Statement of evidence relative to this corner location is on back page

I hereby certify that this document and the data contained herein was prepared by me or under my direct supervision.

James V. Johnson 5/3/06
 Signature Date

Registration No. 44563

Land Surveyor, Professional Engineer

County Surveyor, County Engineer

OFFICE OF THE COUNTY RECORDER
County of _____

SEP 28 2006

I hereby certify that this document was filed in the Co. Recorders office of _____ M. on the day of _____ A.D., 20

County Recorder James V. Johnson
 By _____, Deputy

DOCUMENT NO. _____

STATEMENT OF EVIDENCE:

SOUTH 1/4 CORNER, SECTION 17, T. 106 N., R. 43 W.,
MURRAY COUNTY, MINNESOTA

1866 J.W. BISHOP, U.S. DEPUTY SURVEYOR, MONUMENTED CORNER.

3/22/2006 ULTEIG ENGINEERS, INC., SURVEY CREW, BRIAN PAYNE PARTY CHIEF,
FOUND NOTHING.
SET A 5/8" REBAR WITH CAP: RLS 44563 IN GRAVEL ROAD.
TIES: NE-43.6' TO NAILED "X" ON SIDE OF WOOD POST;
SE-47.4' TO NAILED "X" ON SIDE OF WOOD FENCE POST;
E-2625.10' TO SE CORNER OF SECTION 17;
W-2625.10' TO SW CORNER OF SECTION 17.